



EN
DE
FR
IT
ES
NL
RU
JP
CN

USER MANUAL P.02

GEBRAUCHSANLEITUNG P.09

MANUEL D'UTILISATION P.17

MANUALE D'USO P.25

MANUAL DE INSTRUCCIONES P.33

GEbruikSAANWIJZING P.41

РУКОВОДСТВО ПОЛЬЗОВАТЕЛЯ P.49

安全ガイド P.57

用户手册 P.65

Rotalux



Elinchrom SA Rotalux 05.2021



Introduction

Dear Photographer,

Thank you for buying the Elinchrom Rotalux Softbox. All Elinchrom products are manufactured using the most advanced technology. Carefully selected components are used to ensure the highest quality and the equipment is submitted to many tests both during and after manufacture. We trust that it will give you many years of reliable service.

Please read the instructions carefully, before use, for your safety and to obtain maximum benefit from many features.

Your Elinchrom-Team

Characteristics

The easy mounting Rotalux system is probably the most widely copied of all Softbox systems. However, it is easier to copy a design than a quality and they remain the best units in their class.

What continues to make the Elinchrom units unique are the optional sets of defectors – gold, silver, frosted and translucent that enable the softness / hardness and colour to be modified; fitting centrally over the flashtube at your chosen distance. Folding down like an umbrella, they are easily transported or just kept clean, in their included carrying bag.

Rotalux Speedring with improved mechanics and extremely lightweight, only 370 g. Improved finish of the Rotalux reflector tissue with grey piping for better light efficiency. 360° revolving system.

Folds down like an umbrella, without dismounting the softbox.

Carrying bag for a folded Rotalux is included. Optional Rotagrids to control the light spread, are available for all Rotalux sizes.

Speedrings adapter for other flash brands such as *Broncolor®, Profoto®, OCF Bowens®, Hensel®, AlienBees®, Comet®, Photona® are available.

Security Advise

The maximum modelling lamp wattage for all Rotalux softboxes is limited to 300W. Ensure that the Rotalux is correctly assembled and locked to the flash unit.

The unit, the flash tube and accessories may become very hot during and after use! To avoid injuries, handle with isolating cloth or wait until parts have cooled down.

Even though we use fire retardant materials the fabric should never get in contact with the hot flash tube or the modelling lamp.

The metal speedring and the locking knob for the revolving system may heat up enormously when the flash unit is used at maximum power levels of flash and modelling lamp. Please wait until the parts have cooled down, before packing away.

Always switch the flash unit off before fitting or exchanging reflectors and softboxes.

Ensure that the ventilation system of flash units is working correctly.

Double check that the internal fabric diffuser is correctly fitted and does not make contact with the hot flash tube and the modelling lamp.

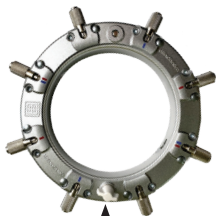
Lower the modelling lamp power and reduce the number of flashes per minute, when small size softboxes are used. The reflective surface is very close to the modelling lamp/ flashtube. The fabric can be damaged by excessive heat.

*Broncolor®, Profoto®, Bowens®, Hensel®, AlienBees®, Comet®, Photona® are protected trademarks that do not belong to Elinchrom LTD.

Rotalux Speedring versions with two locking options

Some Speedrings offer a second thread (locking option) at the rear side, for the OCF mount, which could be used mainly with Rotalux HD versions with Velcro opening at the Speedring side.

Note: Of the two threads, visible on the front and rear side of the ring, only one will block the rotating option!



Front view:

Standard screw rotation lock for all Rotalux softboxes



Rear view:

Optional thread to lock rotation, mainly with OCF mount.

Rotalux Speedring

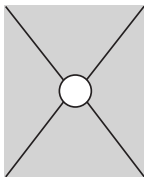
Use the color marks to build your Rotalux softbox depending on your product model. The universal speeding is the same for all units.



STRIP

Red Marks

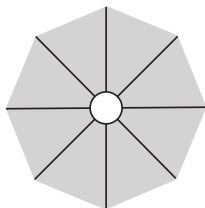
35 x 100, 50 x 130,
90 x 110



SQUARE

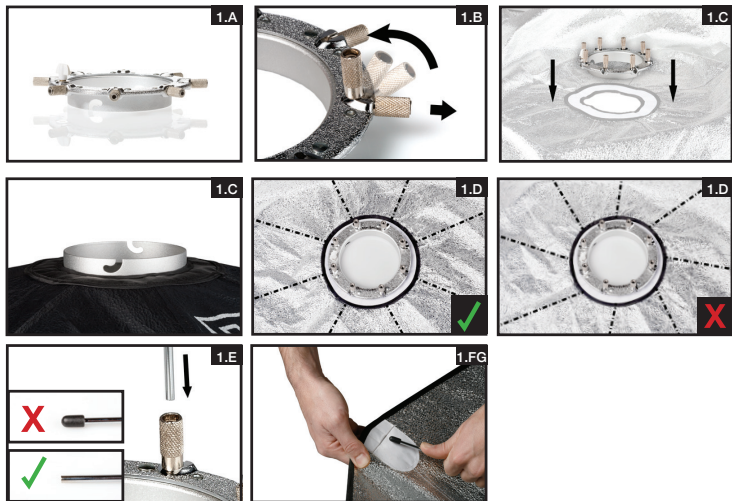
Blue Marks

70 x 70, 100 x 100,
60 x 80



OCTA

All

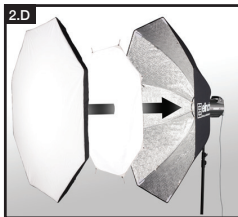
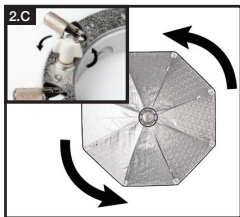


1. Assembling the Rotalux Softbox:

- A) Place the speedring with the locking knob at the top on a firm horizontal surface.
- B) Pull out each of the rod sockets and move them into the 90° vertical position and release.
- C) Place the speedring in the centre of the reflection fabrics.
- D) Ensure that the slots of the rod sockets coincide with the seams of the reflection fabrics.
- E) Insert the bare ends of the rods into the sockets of the Speedring.
- F) One at a time bend rods opposite outwards, applying gradual pressure on the capped end to give slight curvature. Manipulate the respective capped ends to fit into the cloth pockets at the coinciding corners of the reflection fabrics. If necessary, readjust as shown in the picture 1.D.
- G) The rods fixed at both ends, have now a convex curve. Hold the rod and twist each to make the curve concave.



- H) Hold down the Speedring in a fixed position. One at a time apply pressure on the rods near the rod socket. The rod sockets return to the previous horizontal position and lock. The reflection fabrics now acquires a concave tent-like curvature.
- I) The Rotalux Softbox is now ready to be mounted on the flash unit.



2. Mounting the Rotalux Softbox on the Elinchrom flash-unit:

- A) Turn the locking ring of the flash unit (mounted on the tripod), anti clockwise to unlock the bayonet. Remove the protective cap from the flash unit anti clockwise.
- B) Ensure that the locking knob on the Speedring is tightened (see 2.C). Insert the Rotalux speedring and turn clockwise. It clicks into place. Turn the locking ring clockwise to lock the bayonet with the Rotalux Speedring attached.
- C) The angle of the Rotalux softbox can be adjusted with the revolving system. Unlock the locking knob of the Speedring and turn the softbox into the desired position. Make sure that the Speedring is locked in the bayonet of the flash unit whilst turning the softbox.

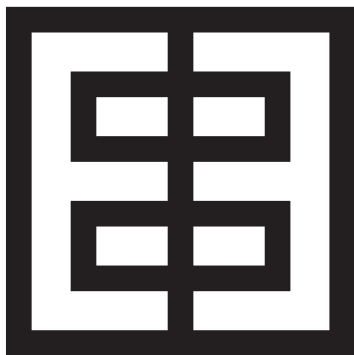
NOTE: The Speedring and the locking knob may become hot when the Rotalux is in use. Protect your hands with heat resistant gloves and switch off the unit and disconnect it from the mains, when you need to adjust the softbox angle.

- D) Attach the diffuser to the softbox.
- E) Fix the diffuser with the Velcro tapes along the softbox sides and edges.

Download the user manual

Please get the user manual in other languages
at this link: <http://bc.gs/41>





elinchrom®