

# The Light Ahead

Studio & Outdoor

**Elinchrom Flash System**

Power by Elinca

ENGLISH

# The Light Ahead

## Elinchrom System

C	O	N	T	E	N	T	S
<b>Compacts</b>	Style FX 100, 400	2					
	Style BX 100, 400						
	Style FX & BX To Go Set	3					
<b>Compacts</b>	Style 300 RX	4					
	Style 600 RX						
	Style 1200 RX						
	Style RX To Go Set	5					
<b>Power Packs</b>	Digital 1200 RX, Digital 2400 RX Digital 1500 AS, Digital 3000 AS	6					
<b>EL- Flashheads</b>	for RX & all Classic Packs	7					
<b>Autonomous Flash</b>	Ranger RX, Ranger RX Speed, Ranger RX Speed AS,	8					
<b>Ranger Accessories</b>	Ranger RX, Ranger RX Speed & AS,	9					
<b>EL-Skyport System</b>	EL-Skyport System, Triggering & Wireless Remote Control	10					
<b>EL-Skyport Software</b>	Hand Remote EL-Skyport Software Mac™ & Windows™	12					
<b>Special Effect Lights</b>	Spotlights, Fiberlite & Ringflash	14					
<b>Continuous Light</b>	ScanLite & MiniLite	16					
<b>Rotalux Softbox</b>	Just more than a Boxlite	18					
<b>Indirect Softlites</b>	Octa, Quadra, Recta & Strip	19					
<b>Accessories</b>	Reflectors & Grids	20					
	Reflectors & Umbrellas	21					
	Cases, Bags, Stands & EL Multi-Table	22					
	Sync Cords, Photocells, IR, DVD Lighting Guide	24					
<b>Power Specifications</b>	Last but not least	26					

More details and actual news about Elinchrom Classic products:

- Classic Compacts
- Classic 3000 Power Pack
- Digital 3000 Asymmetric Power Packs
- Flashheads compatibility list
- Special Offers

Please note: Extra brochures for:

- D-Lite single units & Sets «Entry Level Compact Flash System
- L-Skyport “Wireless Trigger, Remote and Computer Remote System”

find at

[www.elinchrom.com](http://www.elinchrom.com)



# Style FX & BX

Compact Flash Series **NEW LOOK!**

## “Uniquely Elinchrom”

Four new Style compact flash units with tomorrow's specifications, at yesterday's prices!

New digitally stabilised entry level compacts for the most demanding imaging. Power ranges 400 Ws - 25 Ws and 100 Ws - 6.5 Ws, with stability to less than 0.5 Ws! Ready to go anywhere ... with Style BX Multivoltage (90 V-260 V) and plug-in flash tube.

These are the most advanced low cost units in the world. Another Elinchrom First!

## Why Style FX & BX?

- Multivoltage 90 V – 260 V for Style 100 BX and Style 400 BX.
- Plug-in flashtube for Style BX units.
- Rapid re-cycling times with fast flash duration for all FX and BX.
- Fan cooling for all FX and BX units.
- Three modelling lamp modes; proportional / free / off.
- Auto Dump Function, ensuring efficient power correction.
- 5 f-stop power range variable in precise 1/10 steps (1/16 – 1/1).
- Large and digital power LED readout.
- Low 5 V sync voltage to protect digital camera electronics.
- Centred umbrella fitting.
- Sensitive photocell.
- Lightweight and compact for Location work
- Our omega flashtube is precisely positioned in the internal reflector, to avoid the inherent uneven illumination produced by other non-concentric or U-shaped flashtubes!
- Style BX offers Multivoltage technology with automatic voltage detection from 90 V to 260 V and a long life Halostar modelling lamp. When changing voltages, only replace modelling lamp.

## Style FX 400

230 V / 20531



## Style FX 100

230 V / 20529



## Style BX 400

Multivoltage / 20534



## Style BX 100

230 V / 20532



## Power Control FX & BX

Power control for modelling lamp +/- 1/10 f-stop

Large precise LED power display

Three modelling lamp modes, proportional / free / off

Power control for flash power +/- 1/10 f-stop

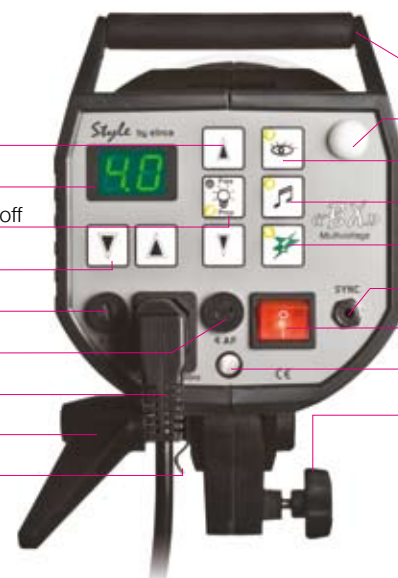
Mains fuse

Fuse for modelling lamp

Mains inlet socket

Level tilt head

Second umbrella holder system



Handle

Highly sensitive photocell

Photocell on / off

Charge ready beep, on / off

Open flash with LED indicator

Sync socket, 3.5 mm jack

Illuminated mains switch on / off

Centred tube, for EL-umbrellas, ø 7 mm

Knurled clamp screw

# Style RX

Digital Performance All In One

**NEW LOOK !**



Today's digital workflow and camera systems demand greater precision at all power settings with an extended power range to cover extreme requirements. Precise repeatability with ultra-stable electronics controlled by large digital displays. Elinchrom performance characteristics now exceed the most demanding criteria. The revised range of Style RX units, with power variation from 1200 Ws to 9 Ws, offer optional digital 2-way remote control and provide the possibility to interface with Mac and PC workstations, combining seamlessly with the new digital RX packs.

## Why Style RX ?

- Interface for Mac and Windows workstations. Control 1, 2, 3 or 4 studios each with 16 units, with EL-Skyport.
- Low 5 V sync voltage protects digital camera systems.
- Ultra consistent performance for every digital application. (QuickTime VR, multi and single shot digital imaging).
- Rapid re-cycling times, maintaining stability.
- Action freezing flash durations at full power Style RX 300-1/2850 s; RX 600-1/2050 s; RX 1200-1/1450 s / t=0.5
- Optional remote control with large digital LED feedback display of all functions!
- New translucent, fire retardant, robust body shell encasing the die cast alloy chassis.
- Lightweight elegance for easy "out of studio use".
- Integral reflector, designed to maximise power efficiency combined with our plug-in omega flashtube precisely positioned avoids the inherent uneven illumination produced by non-concentric or U-shaped flashtubes.
- **EL-Skyport**, wireless control and triggering! Set flash power and switch on/off the modelling lamp with the Transmitter, or control and set all features with Mac™ or Win™ computer. See pages 10-12.

## Style 300 RX

230 V / 20625 - 110 V / 20725

## Style 600 RX

230 V / 20626 - 110 V / 20726

## Style 1200 RX

230 V / 20627 - 110 V / 20727



## Power Control RX

Power control for modelling lamp +/- 1/10 f-stop

Three modelling lamp modes, proportional / free / off

Large precise LED power display

Power control for flash power +/- 1/10 f-stop

Open flash with LED indicator

Mains fuse

Fuse for modelling lamp

Mains inlet socket

Level tilt head

Second umbrella holder system



Handle

Highly sensitive photocell

Photocell on / off

Sync socket, 3.5 mm jack

Charge ready beep, on / off

EL standard sync socket

Socket for EL-Skyport & Hand Remote Control

Illuminated mains switch on / off

Centred tube, only for EL-umbrellas, ø 7 mm

Knurled clamp screw

# Power To Go... Style FX & BX

**The portable studio flash system, advanced... and low cost!**

## FX To Go

### Style FX To Go 200 V – 260 V

	Qty	Item
20647	2	Style FX 400
20646	2	Style FX 100

## BX To Go

### Style BX To Go Multivoltage 90 V – 260 V Plug-in tube

	Qty	Item
20747	2	Style BX 400
20746	2	Style BX 100

2 Modelling lamps, 2 flashtubes, fuses, 1 sync cord, 2 power cables are included standard items in each head set. Each pair of heads & accessory set fits into the Elinchrom case.

The umbrella stand set is listed separately but together makes up the complete set.

### Each head set also includes: Accessory set

	Qty	Item
26143	1	Reflector 16 cm
26124	1	Protective hood
26127	1	Portalite 60 x 60 cm
26305	1	Translucent deflector and rod
33209	1	Travelling Case

### Umbrella Stand Set 20564

	Qty	Item
26350	1	Umbrella silver 83 cm
26351	1	Umbrella translucent 83 cm
30101	2	Stand 88 x 235 cm
33220	1	Carrying bag

The internal reflector with 90° light distribution avoids inherent uneven illumination produced by non-concentric or U-shaped flashtubes.

The bayonet reflector fitting with additional security breech lock accepts all Elinchrom & Prolinca reflectors since 1974.

Another first is the centred umbrella fitting for deflectors or umbrellas.

Elinchrom standards for all Style FX, BX, RX compact flash units and flashheads.

Style FX & BX are the third generation of Style compacts. Performance and value at affordable prices are typical of Elinchrom. Don't compromise... buy the best!

## Translucent Deflector

Included, to modify softness. Only Elinchrom offers a central fitting for even light distribution.

Lightweight, performance and power at low cost for your trip!



# Style RX To Go

## Why Style RX To Go

- Integrated Mac-PC interface for computer control, with EL-Skyport.
- Integrated socket for hand remote control.
- Ultra consistent performance for digital.
- Rapid re-cycling times.
- Action freezing flash duration.
- Lightweight elegance for easy out of studio use.
- 6 f-stop variable flash power in 1/10 steps.
- Fan cooled.
- Plug-in flash tube.
- Digital touch button display.

## Style RX To Go

230 V	110 V		
20643	20743	2	Style RX 300/300
20644	20744	2	Style RX 600/600
20645	20745	2	Style RX 1200/1200

1 Sync cord, 2 power cables, 2 modelling lamps are included.

## Each head set also includes: Accessory set

33209	1	Elinchrom head case
26143	2	Reflector 16 cm
26425	1	Snoot
26129	1	Portalite 66 x 66 cm

## Stand Umbrella Set 20564

Free Umbrella Stand Set included.

26351	1	Umbrella translucent 83 cm
26350	1	Umbrella silver 83 cm
30101	2	Stand 85-235 cm
33220	1	EL carrying bag

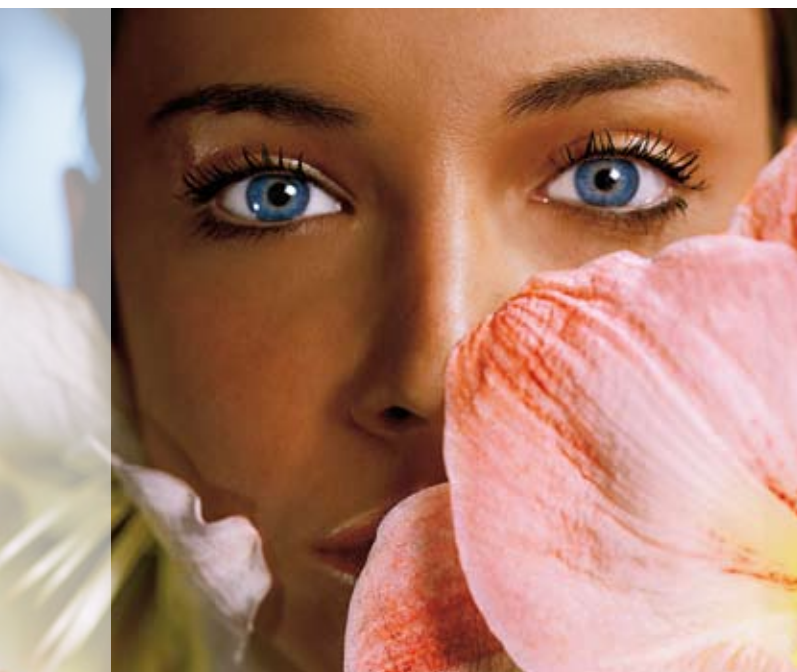
## Style RX 300 To Go



## Style RX 600 To Go



## Style RX 1200 To Go



EL-Skyport, wireless control and triggering! Set flash power and switch on/off the modelling lamp with the Transmitter, or control and set all features with Mac™ or Win™ computer. See pages 10-12.



Optional hand remote Hand Remote Set 19342.



# Digital Power Packs

## Digital 1200 RX & 2400 RX

Elinchrom has a long tradition of excellent power pack designs for professional imaging. The latest Digital RX series incorporates electronic know how combined with high manufacturing quality at affordable prices. Highlights like computer interface, ultra stable circuitry for consistent flash power and low sync voltage to protect digital cameras are just some of many advantages.

### Why Digital RX power packs ?

- Ultra stable circuitry for absolutely consistent flash power.
- Unique dedicated Digital S flashheads for QTVR and 4-shot durability and stability.
- Budget priced Digital SE, SEE flashheads for single shot use.
- High Speed A - and regular S heads available for fashion and general purpose photography.
- Precise digital power display to complement advanced technology.
- Digital power values compatible with the Elinchrom system.

- Modelling lamps proportional or independent, with display.
- Fast recycling consistent with precision and stability.
- Remote control (optional), 2-way with read out. Extension cables available for tracking / wall installations
- Surge resistant circuits, Auto Dump Function, twin sync sockets, ready beep, sensitive photocell, anti shock edgings, fan cooled.
- Price / performance / quality – Elinchrom value, just buy the best!!
- **EL-Skyport**, wireless control and triggering! Set flash power and switch on/off the modelling lamp with the Transmitter, or control and set all features with Mac™ or Win™ computer. See pages 10-12.

### Digital 2400 RX

230 V – 10258  
110 V – 10257

### Digital 1200 RX

230 V – 10256  
110 V – 10255



Hand Remote Set 19342

## Digital 1500 AS & 3000 AS

### Total Asymmetry

The super stabilised Digital AS line for single and multi-shot digital photography with user friendly total power asymmetry allow 57 (power variation options) in 1/10 f-stop on each head and permit hundreds of 2 head or 3 head power combinations. Maximum total power is always available as the microprocessor compensates for each and every modification.

### Why Digital AS?

- Total power asymmetry, each head accepts different power settings.
- Large green LED power displays.
- Charge speed selectors, rapid, speed, normal.
- Full modelling lamp control with soft start function to increase lamp life.
- Initial charge control, when the pack has not been recently used, to reform capacitors it will charge slow.
- 8 channel infrared remote control.

### Digital 1500 AS

230 V – 10248 / 110 V – 10247



### Digital 3000 AS

230 V – 10254 / 110 V – 10253



Digital 1500 AS, 3000 AS and Classic 3000  
Details at [www.elinchrom.com](http://www.elinchrom.com)



# EL- Flashheads

## For Elinchrom power packs

### Why Elinchrom Digital Flashheads?

- To ensure the ultimate retention of colour balance, Digital flashheads with advanced specifications will satisfy the most demanding applications, like QuickTime VR or Flash. Designed to withstand extreme frequency of use, the heavier duty flashtubes minimise changes in light characteristics and output.
- The ideal combination with the Elinchrom Digital microprocessor-controlled power packs.
- NB. For best digital multishot results, flashheads should be of similar type and make. "Do not mix flashheads!"

### X 6000 N

230 V – 20182 / 110 V – 20183  
The flat twin interlocking flashtubes bring a focusable light source to high power users. Cabled into a single 6000 Ws power source, the flash duration is halved. Cabled into two 3000 Ws power sources, faster discharges may be cycled quicker. Glass domes optional.



### Digital SEE

230 V – 20172 / 110 V – 20173  
This flashhead can be used up to 2400 Ws. The "long life" Swiss made flashtube covers all universal studio use. This head is equipped with 300 W halogen lamps. Glass domes optional.

### Digital SE

230 V – 20174 / 110 V – 20175  
This head accepts 3000 Ws and is suitable for standard multishot imaging. The heavier duty flashtube has electrodes that are less affected by colour variations with frequent use e.g. normal three or four shot systems. Glass domes optional.

### Digital RE

230 V – 20170 / 110 V – 20169  
This head creates sharp linear shadows and spreads light evenly over a wide area. Excellent also for sunlight effects (windows, Venetian blinds), depth enhancing "oblique" and dynamic shadow effects. The articulated head facilitates precise positioning to any angle. Integral supports for barndoors and filters.



### Digital S

230 V – 20150 / 110 V – 20149  
This head offers the ultimate in stability for standard multishot imaging and QuickTime VR sequences. To resist heat stress, these flashtubes have over sized heavy-duty electrodes complementing and optimising the precision of the Digital RX units. Glass domes optional.



### Why Elinchrom Flashheads?

- Efficient built-in reflector, with a 90° light distribution to maximise softbox performance.
- Small flashtube diameters for short flash durations and better subject control. UV coated.
- Extremely lightweight, only 2.4 kg, including heavy-duty cable, 5 m long.
- Reflector-bayonet with breech locking ring, fits all Elinchrom reflectors since 1974. Huge reflector/softbox range.
- Aluminium chassis with polyamide fire resistant housing.
- Centred umbrella fitting with additional umbrella holder on the stand adapter.
- Efficient low noise fan cooling.
- Three optional Pyrex domes: transparent, mat and 400°K warm.
- Illuminated on/off modelling lamp switch.
- 500 multi-strand power cables for maximum power with flexibility.

### Mini S

Budget priced

230 V – 20106 / 110 V – 20105



### Twin X4

230 V – 20180 / 110 V – 20181  
Twin cables and flashtubes extend the range of use. Both cables in one unit halves flashdurations. The twin cables plugged into two Digital RX 1200 power units give the power of a Digital RX 2400 with the recharge time of a Digital RX 1200 or the head delivers 4800 Ws maximum power units. An economical twin head for softboxes.



### Mini A Speed

Budget priced

230 V – 20104 / 110 V – 20103



The classical metal housings complement the compact dimensions of the RX power packs. These are not eco-units; all components, flashtubes, fans, power cables conform to the normal Elinchrom standards.

### Pyrex Glass Domes

Glass domes are delivered in transparent, as protection and in satin matt to soften shadow edges. The 440° K glass dome gives a warm tone for portraiture or food photography.

- **Glass Dome Transparent** with fitting set 24925
- **Glass Dome Satin** with fitting set 24926
- **Glass Dome 400°K warm** with fitting set 24927
- **Spare fitting set** 620.207 / 3 x

### A 3000 N Speed

230 V – 20168 / 110 V – 20167



Unique super short flash duration with a single, twin electrode flashtube to ensure even light distribution. Glass domes optional.



### Flashhead Extension Cables

- **Flashhead ext. cable 5 m** 21040
- **Flashhead ext. cable 10 m** 21041



# Autonomous Flash

## Ranger RX System

The upgraded Ranger RX unit, plus the new Speed and Speed AS units are designated RX because they may be operated by remote control – by computer or by a handset – enormously increasing the ease of use on location.

The basic unit has an improved “fast” recycling sequence and the Speed unit will recycle to full power in 2.9 seconds plus up to 250 flashes.

The Speed unit is available with either 2:1 asymmetrical or symmetrical output.

It incorporates the most advanced miniaturised components weighing in at only 8 Kg – much lighter and smaller than any comparable unit.

The same modified circuitry has permitted an extension of its power range to 7 f-stop, with enhanced stability. We believe these will be the units to which others will be compared.



Ranger RX computer remote option.

### Why Ranger RX Speed AS & Ranger RX ?

- Consistent flash power at any battery level.
- Guide number all units max. power f-64.1 @ 2 m distance 100 ISO
- Charger, Multi-voltage with European, USA and UK adapters.
- Battery re-charging - to full power- 3 hours.
- The charger can charge the battery in the unit or externally.
- Power saving, auto cut off of modelling lamp and charging
- Modelling Lamp modes, 15 s, 30 s & off
- Photocell, adapted to release in bright ambient light.
- Charge Ready Beep, on/off, with green LED indicator.
- Charge Ready Light / Open Flash, indicated with bright LED!
- Auto Dump Function, adjust power levels after setting automatically
- Battery Charge Indicator, two green LED 100%, one green LED 50%, one red LED approx. 10%. The Ranger electronic protects the battery from over and complete discharging. The battery can be recharged at any level. There is no “Memory-Effect”!
- Battery-Box Quick Release, to release, press the two push buttons at the left and right side of the housing, lift up the unit releasing the existing battery - then place the pack over the replacement battery, pressing firmly down for automatic locking.
- Moisture resistant rubber protectors.
- Raised sockets complete with covers; electronics only in the upper part of the unit.
- **EL-Skyport**, wireless control and triggering! Set flash power and switch on/off the modelling lamp with the Transmitter, or control and set all features with Mac™ or Win™ computer. See pages 10-12.



### Ranger RX

10263  
incl. Shoulder Strap, Battery Box, Sync cord, Charger & EL Skyport Adapter.



### Ranger RX Speed

10265  
incl. Shoulder Strap, Battery Box, Sync cord, Charger & EL Skyport Adapter.



### Ranger RX Speed AS

10267  
incl. Shoulder Strap, Battery Box, Sync cord, Charger & EL Skyport Adapter.

Actual Ranger RX Way To Go Sets find at [www.elinchrom.com](http://www.elinchrom.com)

### What is new ?

	Ranger RX	Ranger RX Speed	Ranger RX Speed AS
Quick re-charging to full power	5.5 s	2.9 s	2.9 s
Power range 7 f-stop	1100 Ws – 8.5 Ws		1100 Ws – 5.5 Ws
Remote connection	For optional RX Hand Remote Control / all models		
PC interface	To connect to computers with MAC/Windows operating systems / all models		
Asymmetrical power	Symmetrical	Symmetrical	66% - 33%, two heads connected
Autonomy max. / min. power	140 – 3800	250 - 5100	
Weight	6 kg	8 kg only, smallest unit in this class	

# Ranger RX Accessories

## Accessories

### Ranger RX, RX Speed & RX Speed AS

Ranger S 20100  
Ranger A Speed 20101



### Ranger RX Ringflash 1500 20493

The ultimate combination for "In" and "Out" door photography!

Ranger RF 1500, complete with 4-pole flashtube, freezes movement with a 1/2600 s (t0.5) @ full power. Two metre flash cable enables photographers to use it freehand (with the battery pack shouldered or in a backpack). The internal Ringflash diameter of 100 mm accepts a wide range of camera lenses.



**NEW**  
Car Battery Charger 11093  
For use with any 12 V car battery.



**NEW**  
EL-Skyport Transceiver RX Adapter 19374



**NEW**  
Shoulder Strap 19289



Ranger A/S Extension Cable 11096  
4 m only for Ranger S and A flashheads.



Ranger Adaptor Cable 11095  
adapts EL standard flashheads to the Ranger RX power packs. (Mains modelling lamp and fan are deactivated.)



EL Travelling Case 33215  
For Ranger and power packs



**NEW**  
EL Ranger Snappy 19288  
The Ranger Snappy is a lightweight and easy to fit carrying option with an ergonomically designed shoulder strap. Fits to all Ranger RX models.



### Ranger RX Speed & Speed AS

Battery Box 19280  
complete with battery for approx. 250 flashes @ full power.



Multivoltage Quickcharger 19283  
Only for 10265 and 10267



### Ranger RX

Battery Box 19290  
complete with battery for approx. 140 flashes @ full power.



Multivoltage Quickcharger 19293  
with multi-socket adapters.



Car Battery Supply 11094  
for use with any 12 V car battery. Integrated protection circuit against reversed polarity.



# EL Skyport System **NEW**

## Trigger & Remote System

### Elinchrom Wireless System

Two in one. Flash triggering and wireless studio remote control of all RX unit functions.

A new miniaturised, very secure high speed data transmission system providing hand held or computer wireless function control of all Elinchrom RX power units. There is also a "Universal Set" for flash synchronisation with any other flash system.

Huge technology advances have allowed the modules to be as small as 18- 30 g each except for the Universal Receiver, which weighs 51 g including its re-chargeable battery.

For multiple flash unit control, there are 8 frequency channels and 4 workgroups.

EL-Skyport offers four powerful wireless modules:

#### EL-Skyport **Transmitter** 19351



This module controls basic functions of an Elinchrom RX unit to which a Transceiver RX 19353 is attached. To control all RX functions the USB Transceiver RX 19354 and the latest EL Skyport software is required which also offers additional features such as "strobing".

The Transmitter synchronises remote flash units when each is fitted with either a "Universal" (fitting all flash brands) or the Transceiver RX (fitting Style RX, Digital RX and Ranger RX units). The RX Transceiver also provides control over the power and modelling lamp of all Elinchrom RX flash units, directly from the Skyport Transmitter.

#### Features

- +/- Buttons to change flash power settings of RX units and to switch Modelling lamp on/off, without using a computer.
- Studio operating area is about 50 m and 120 m outdoors.
- Includes Hot-shoe with sync socket.
- Test button for manual flash trigger.
- Interference free operation with 40 Bit security.
- Switch to select 8 frequency channels --- for example between separate working areas.
- Switch to select 4 Workgroups --- adjusting and synchronising individual units or groups
- The long life Lithium battery provides 50000 flashes or approximately 3- 6 months lifetime.
- The "All" switch controls all units in Workgroup 1-4.
- The moveable antenna optimises reception and working distance.

#### EL-Skyport **USB Transceiver RX** 19354



The USB Transceiver RX module fits any Mac™ or Windows™ computer. By installing the EL-Skyport software, all Elinchrom RX flash units can be controlled. The program automatically searches for the "Transceiver RX" and "Universal Receiver" modules.

Note: Full remote control is only available by using a full RX Transceiver system. RX flash units or other flashes using the "Universal Receiver" can only offer synchronisation and strobing options.

Control flash power  
Modelling lamp on / off



#### EL-Skyport **Receiver Universal** 19352



The Universal Receiver is compatible with Classic Elinchrom units and any other flash brand. Delivered with EL - standard sync cable and 3.5 mm jack, to connect to other flash brands. The internal, rechargeable Li-Ion battery provides about 30 hours of battery operation. To maximise battery life, the Auto-Standby function activates when the unit is not used for 4 hours. The charger can be connected to the mains whilst the Universal Receiver is in operation. The status LED shows charge and operating modes.

#### Features

- Group and frequency channel settings.
- When used with the EL-Skyport wireless software, this module is recognised as a flash unit and accepts both triggering and "Flash-Delay" settings --- for example where sequenced flash may be required and some other EL-Skyport features.
- The Li-Ion battery recharges in approx. 3 hours.
- The LED indicates charge and operating modes.

#### EL-Skyport **Transceiver RX** 19353



This module fits only Elinchrom RX units, using the integrated multiple interface for triggering and for the remote computer operating option. No internal battery is required, just plug into a Style RX, Digital RX or Ranger RX flash unit (Please remember to double check the "Group" and "Channel Frequency" settings) and the Transceiver RX is ready to use. To control flash power, modelling lamp on/off and flash synchronisation, requires only the Transmitter. To control all RX functions, the latest EL-Skyport software and the USB RX module is required. The EL-Skyport software also offers additional features, such as the programmable "Flash Delay", Flash-Counter and other control features will be added as future software upgrades.

**EL-Skyport Universal Trigger Set 19360**

19351	1	Transmitter, battery and spare battery drawer
19352	1	Universal receiver including charger
11120	1	Sync cable 20 cm, 2.5 mm Jack / Camera X-socket
11122	1	Sync cable 40 cm, 3.5 mm / 3.5 mm Jack
11123	1	Sync cable 40 cm, 3.5 mm Jack / EL Standard Sync socket
11125	1	Sync Adapter 6.3 – 3.5 mm

**EL-Skyport RX Trigger Set 19362**

19351	1	Transmitter, battery and spare battery drawer
19353	2	Transceiver RX
11120	1	Sync cable 20 cm, 2.5 mm Jack / Camera X-socket

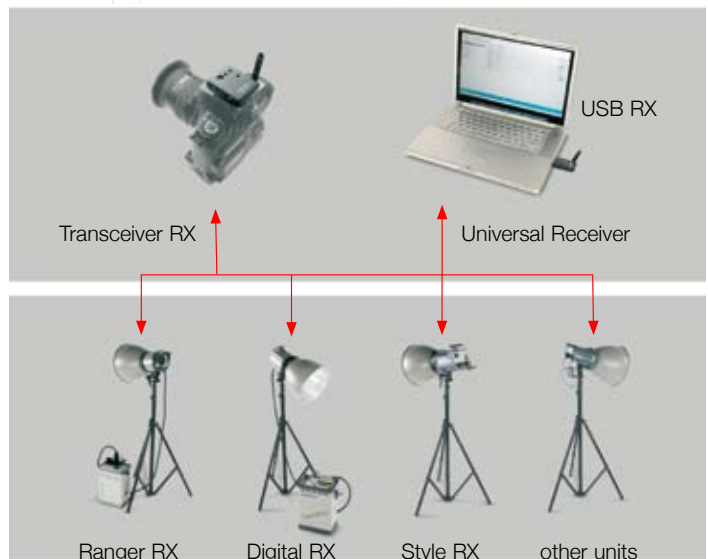
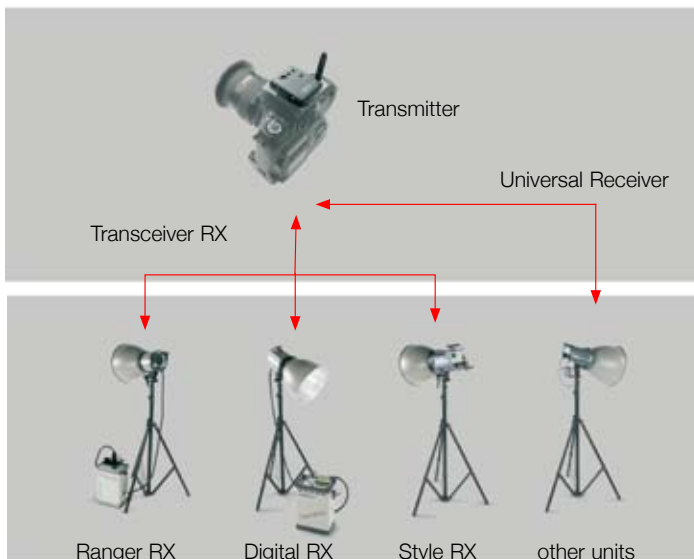
Note: Ranger RX require the remote adapter 19374



**EL-Skyport Computer Remote / Trigger Set 19361**

19351	1	Transmitter, battery and spare battery drawer
19353	2	Transceiver RX
19354	1	USB Transceiver RX
11120	1	Sync cable 20 cm, 2.5 mm Jack / Camera X-socket
11121	1	USB extension cable

Download free EL-Skyport software for Mac™ or Windows™.  
www.elinchrom.com



# EL Skyport Software **NEW**

## EL- Skyport Software Version 2.0.1

The second release of the EL-Skyport software includes exciting features for photographers who are optimising their digital workflow by using Mac™ or Windows™ operating systems. The modern, digital studio management software operates wirelessly up to 64 RX flash units.

### What you need to make it work:

- Elinchrom RX compacts, mains power packs or battery power packs with the included computer interface.
- EL-Skyport Transceiver RX module for each RX unit
- EL Skyport USB Transceiver RX for the computer
- EL Skyport software for Mac™ or Windows™ operating systems and of course a computer.

### The program shows all RX unit settings:

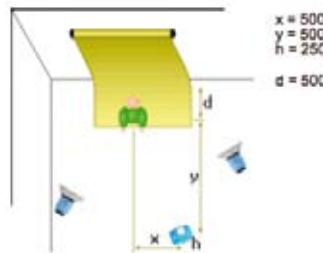
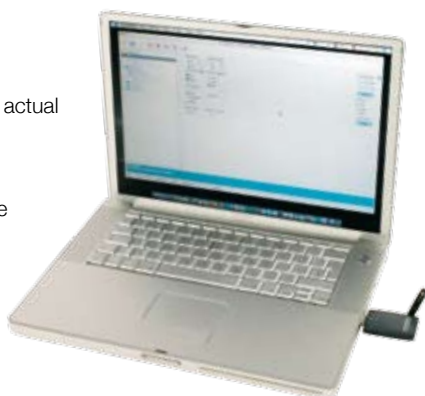
- Flash power setting in 1/10 f-stop or in individually settable steps
- Modelling lamp setting in 1/10 f-stop, proportional, free and off
- Photocell on/off
- Ready charge beep on/off
- Flashhead socket selection A/B (only activated with Digital RX power packs)
- Standby

### Additional Features:

- Automatic RX unit detection and addressing. As soon as the RX unit is switched on and connected with the EL-Skyport Transceiver, the software searches for RX units.
- Flash counter and on/off counter; the software reads out online RX flash unit information. This data is stored in the RX Micro controller and is not resettable. This is useful information for "Rental, Service and Second-User."
- Individual settable Flash-Delay for strobing effects.
- Store function for studio lighting setups including reflector, accessory and unit settings. By recalling the settings, the RX unit automatically applies stored parameters.
- Includes "Test" feature for EL-Skyport modules.
- Individual setting of "Preferences".

More screenshots and actual information are available at: [www.elinchrom.com](http://www.elinchrom.com).

Download and upgrade free EL-Skyport software.



### EL-Skyport and Hand Remote Extension Cables

RX series except Ranger

- Remote cable 1.2 m 11100
- Remote cable 2.4 m 11101
- Remote cable 4.8 m 11102
- Remote cable 9.6 m 11103
- Remote cable 19.2 m 11104



### Ranger RX Remote Cable

For EL-Skyport & Hand Remote

- Remote cable 1.6 m 11106
- Remote cable 3.2 m 11107
- Remote cable 6.4 m 11108
- Ranger RX Adapter cable 20 cm 11110

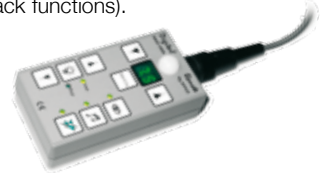


## Hand Remote Control

The Hand Remote Control enormously increases the flexibility of all "RX" flash units. Optional remote cables in 1.2 to 19.2 m, the integrated highly sensitive photocell and the 3.5 mm sync socket helps to control and trigger any RX flash unit at long distances. This item operates all functions of Style 300 RX, 600 RX and 1200 RX.

The RX power pack range Digital RX 1200/2400 and the new Ranger RX battery powered system accepts the same Hand Remote and operates almost all functions.

(Slow charge and the head A or B selection for power packs is not available. Only the PC / Mac Software can operate all power pack functions).



### RX Hand Remote Control Set 19342

- Hand Remote 19340
  - Remote Cable 1.2 m 11100
- For Style RX, Digital RX, for Ranger RX adapter cable 11110 is required.

### Ranger RX Hand Remote Set 19343

- Hand Remote 19340
- Ranger RX Remote Kabel 1.6 m 11106



### Sync Cables

- Sync Cord 3.5 jack, 2 m 11084
- Sync Cord 3.5 jack, 5 m 11088





# Special Effect Lights

## Spot on @ Elinca

The Elinchrom Fresnel- and Projection Spot-Line covers all professional needs for sophisticated lighting in portrait and commercial photography. High quality projection-lenses allow precise and crisp illumination.

## Spot - Accessory Type

Usable with any Elinchrom/Prolinca head.



## Minispot - Accessory Type

26420

A basic hard edged spot. Supplied complete with gobo/filter holder and one set of gobo's, various shapes and spots. Fits to any ventilated Elinchrom flashhead.

Incl. listed accessories:

**Set of 5 gobos** ø 52.5mm 26418

**Filter holder** 26422

**Lens** 26423



## Zoom Spot 18° - 36° 26481

The new accessory spot accepts all Elinchrom and Prolinca heads. High quality lenses for size and sharpness control. Complete with four integral masking "blades". To simplify maintenance, the lenses are easily accessible for cleaning.

## Zoom Spot Accessory Set 26484

Gobo holder, 10 gobos, 2 front masks, filter holder, set of 10 assorted filters. The ultimate "Zoom Set".



## Fibre Optic Kit

**Kit with two glass fibre cables** 26430  
**Kit with one glass fibre cable** 26431

The "captor" holds up to three cables, one metre long and 10 mm diameter for maximum light transmission. Correctly colour balanced, they are indispensable for most small object-photography and dynamise larger subjects by highlighting or throwing long isolated shadows. Fits to any ventilated Elinchrom flashhead.



## Fibre Optic Kit 1

Incl. listed accessories:

- Fibre cable adapter** 26433
- Accessory/filter-holder** 26434
- Focussing tube** 26435
- Lens hood** 26436
- Adapter f. duct extension** 26437
- Set of 10 filters** 26438
- Quick coupling device** 31150
- Metal base plate** 31153
- Articulated arm** 31161
- Fibre duct holder** 31162
- Mini holder for accessories** 31163
- Carrying base** 33208
- Fibre duct** 50163

## Fibre Optic Kit 2

Additional to Kit 1:

- Accessory/filter holder** 26434
- Focussing tube** 26435
- Lens hood** 26436
- Articulated arm** 31161
- Fibre cable holder** 31162
- Fibre cable** 50163



## Ringflash 3000

20494

The RF 3000 is dedicated to Elinchrom power packs discharging up to a maximum of 3000 ws per exposure. To retain ease of handling, the unit has a single 5 m power cable, which reduces weight to approximately 1.9 kg. The universal camera adapter with full adjustments enables any 35 mm or medium format camera to be conveniently fitted. The Ringflash is a unique light source ensuring totally shadow less but concentrated illumination for high contrast or high key lighting. Very popular light source for fashion, beauty, industrial and much advertising photography. To modify the light characteristic into a semi diffuse light source, replace the protection glass filter with the matt glass diffuser code 402.013. To use the RF 3000 with Ranger RX the Ranger adapter cable 11095 is required.



## RF Ranger RX 1500

20493

The Ringflash Ranger RX 1500 is compatible the Ranger RX battery pack system and operates everywhere, a flexible solution for creative imagers.

Why Ringflash...?

Lightweight - only 1.9 kg. Use it freehand, with it's integrated ergonomic handgrip.  
Action freezing - the 4 -pole speed flashtube freezes action with a 1/2600 s flash duration.  
The multi camera fitting combined with the 100 mm internal diameter accepts a wide range of cameras and lenses.



## Glass-Diffuser RF

402.013

To modify the light characteristic into a semi diffuse light source, replace the protection glass filter with the matt glass diffuser code 402.013.





# Continuous Light

## ScanLite

Halogen ScanLites are an excellent choice for low cost digital photography, video and many other imaging requirements. Essentially they are flashheads without full electronics, they have the same low noise fan and the huge range of Elinchrom accessories.

Available as single units of three different powers, two head and three head sets are offered with included selection of lamps and fuses to allow varied power combinations.

Housed in the stylish Elinchrom 33209 case, they make an elegant outfit when in use. The approximate stand sets and carrying bag are listed separately as requested by the owners of flash systems who wish to purchase the lamp heads. If the stand umbrella sets are required, they are priced very competitively.

### Why ScanLite?

- Asymmetrical distribution by using 150 W, 300 W, 650 W & 1000 W Halogen lamps with Pyrex dome.
- Low noise cooling fan and overheat protection (thermal cut out).
- Huge range of accessories; reflectors, umbrellas and softboxes.
- Reflector bayonet with breech locking ring, accepts Elinchrom accessories since 1974.

### ScanLite 300, 650, 1000

#### Halogen ScanLite

230V

20996	ScanLite 300 W incl. glass dome, lamp
20997	ScanLite 650 W incl. glass dome, lamp
20994	ScanLite 1000 W incl. glass dome, lamp

#### Halogen ScanLite 1000

110V

20993	ScanLite 1000 W incl. glass dome, lamp
23053	Halogen 1000 W

### ScanLite To Go

#### ScanLite To Go 2 Head Set 20657

230 V

20996	1	ScanLite 300W incl. glass dome, lamp
20997	1	ScanLite 650W incl. glass dome, lamp
26143	2	Reflector 16 cm
23005	1	Halogen 650 W
23052	1	Halogen 1000 W + 19037. PC
33209	1	Elinchrom black case

*Note: Replace fuse when used with other halogen lamp wattage*

#### Stand Set A (Optional)

30160	1	2 Stands 88-235 cm, 1 carrying bag
-------	---	------------------------------------

#### ScanLite To Go 3 Head Set 20658

230 V

20996	1	ScanLite 300 W incl. glass dome, lamp
20997	1	ScanLite 650 W incl. glass dome, lamp
20994	1	ScanLite 1000 W incl. glass dome, lamp
26143	3	Reflector 16 cm
23005	1	Halogen 650 W
23052	1	Halogen 1000 W
33209	1	Elinchrom black case

*Note: Replace fuse when used with other halogen lamp wattage*

#### Stand Set B (Optional)

30161	1	3 Stands 88-235 cm, 1 carrying bag
-------	---	------------------------------------



# MiniLite

A low priced professional lighting system ideal for digital imaging of small portable products. Supplied as head sets alone for users already equipped with stands or as a complete "Ready to Go" kit.

### Why MiniLite?

- Robust lightweight metal housing. Classic Elinchrom!
- Low noise fan cooling and illuminated on / off switch!
- Multi-purpose reflector, for direct or indirect lighting!
- Detachable mains cable!
- Accepts all Prolinca and Elinchrom accessories!

### MiniLite To Go, Set & Kit

These are super economy units using a modified Elinchrom flashhead for tungsten (Halostar) imaging. The Set is a single system without stand. The Kit is a double set without stands. A stand set with carrying bag is available at a promotional price and any Elinchrom accessory may be used to create an almost unlimited range of effects.

#### MiniLite Kit 20653

230V		
20990	2	MiniLite incl. cable
23018	2	Halolux 250 W / E27
23002	2	Lamp 100 W / E27
26144	2	Reflector 18 cm

#### Stand / Umbrella Set To Go 20564

Optional (not included in the MiniLite Kit & Set)

30101	2	Stand 85 – 235 cm
26351	1	Umbrella translucent 83 cm
26350	1	Umbrella silver 83 cm
33220	1	Elinchrom Carrying bag

#### MiniLite Set 20651

230V		
20990	1	MiniLite incl. cable
23018	1	Halolux 250 W / E27
23002	1	Lamp 100 W / E27
26144	1	Reflector 18 cm



# Rotalux Softbox

## New Design!!

### Rotalux

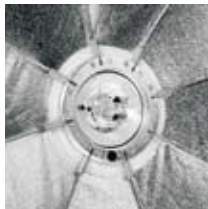
The easy mounting Rotalux system is probably the most widely copied of all Softbox systems. However, it is easier to copy a design than a quality and they remain the best units in their class.

What continues to make the Elinchrom units unique are the sets of deflectors – gold, silver and translucent that enable the softness / hardness and colour to be modified; fitting centrally over the flashtube at your chosen distance. Folding down like an umbrella, they are easily transported, or just kept clean in their included carrying bag.

Rotalux Speedring with improved mechanics and extremely light weight, only 263 g. Improved finish of the Rotalux reflector tissue with grey piping. Better light efficiency.



Rotalux folds like an umbrellas for transportation



360° rotating system for all Rotalux softboxes



Deflector translucent, optional 26305



Deflector gold, optional Set gold / silver 26303



Deflector silver, optional Set gold / silver 26303

Carrying bags see page 22



### NEW

#### Rotalux Deep Octa

Ø100 cm  
Depth : 65 cm  
(Deep Octa)  
26185



**Rotalux 70 x 70 cm**  
Depth : 32 cm  
26178



**Rotalux Ø100 cm**  
Depth : 35 cm  
(octagonal)  
26183



**Rotalux Ø135 cm**  
Depth : 42 cm  
(octagonal)  
26184



**Rotalux 100 x 100 cm**  
Depth : 42 cm  
26179



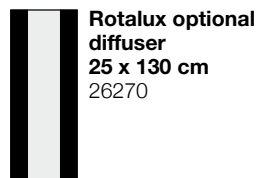
**Rotalux 50 x 130 cm**  
Depth : 42 cm  
26181



**Rotalux 35 x 90 cm**  
Depth : 25 cm  
26180



**Rotalux optional diffuser**  
25 x 130 cm  
26270



**Rotalux optional diffuser**  
15 x 130 cm  
26269



**Rotalux optional diffuser**  
15 x 90 cm  
26268



# Indirect Softlites

## The Beauty Light

### Recta, Strip, Octa, Quadra

Invented in 1982, their unique patented construction and design have won these large lightweight softboxes worldwide popularity.

A lightweight die cast rigid central mounting for the flashhead inside the unit which places the flashtube at the point of focus.

The optical result is a light source, which is so even at the diffuser surface, that many famous photographers use the Octa as a single light source for portrait photography. In the U.S.A. it is often referred to as "The Beauty Light".

This exceptional softness of the light has sold many of thousands of units, adapted to other flash systems which do not have equivalent light sources.

*Note: most of the Beauty shots in this catalogue are created with this light source!*

Illumination table see page 31.



### EL Octa 190 cm

26158 / 360° rotating system  
incl. Carrying bag



### EL Quadra 145 x 145 cm

26156 / 360° rotating system  
incl. Carrying bag



### EL Recta 72 x 175 cm

26154 / 360° rotating system  
incl. Carrying bag



### EL Strip 33 x 175 cm

26160 / 360° rotating system  
incl. Carrying bag



# Accessoires

## Reflectors & Grids

A wide range of superbly designed accessories, completely compatible with the entire Elinchrom and Prolinca studio flash system. Each reflector is designed to do a different job. Decide how you want the lighting to look like and there will be a reflector with precisely the right profile. Endless lighting possibilities guaranteed!

### Standard Reflector 21 cm 50° 26141

This universal reflector combines a high output with a good spread of light. Now with internal recess for push in high efficiency grids.



### Grid Set 21 Basic 26049

Reflector 21 cm 50° 26141  
30° Grid 26052  
20° Grid 26053



### Grid Set 21 Complete 26051

Reflector 21 cm 50° 26141  
30° Grid 26052  
20° Grid 26053  
12° Grid 26054  
8° Grid 26055



### Compact Reflector 21cm 65° 26140

A medium, to wide angle reflector. Well suited for colour gelling large areas.



### Barndoor Set 21 26037

Light shaper carrier 26034  
Barndoors 26 x 16 cm 26006 / 2x  
Barndoors 21 x 15 cm 26009 / 2x



### Barndoor Set 21 Professional 26039

Light shaper carrier 26034 including Trapezium, various sizes  
Barndoors 26 x 16 cm / 2x  
Barndoors 20 x 15 cm / 2x  
Barndoors 20 x 15 cm / 4x  
Rectangular size  
Barndoors 21 x 15 cm 26009 / 2x

### G.P. Grid Reflector 18 cm 60° 26144

A general purpose reflector for travel and 18 cm grids



### Grid Set 18 Complete 26135

Reflector 18 cm 60° 26144  
30° Grid 26100  
20° Grid 26101  
12° Grid 26102  
Gel holder 26132



### Reflector 16 cm 90° 26143

Gives a wide even coverage, excellent for copy work, single source or groups.



### Background Reflector 26165

Delivers an oval pool of evenly distributed light for background and still life. 32 x 21 cm; 360° rotating



### Varistar Reflector 24 cm 90° 26164

Wide coverage with central "hotspot".



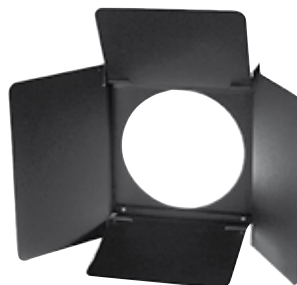
### High Performance Reflector 26 cm 48° 26137

A bright, high performance reflector. Ideal for general sports applications.



### Barndoor Set 26 26040

Lightshaper carrier 26035  
Rectangular size  
Barndoors 26x16 cm 26006 / 4x  
Trapezium Size  
Barndoors 26x16 cm / 2x



### Maxi Lite Reflector 40 cm 43° 26147

Ideal for sunlight effects through windows, creates hard and brilliant highlights.



### Maxi Spot Reflector 40 cm 29° 26149

The same shape as the Maxi Lite Reflector, but produced with brilliant, glossy reflection material for very high efficiency, throws light even over longest distances. A narrow powerful beam creates deep, sharp shadows.



### Protective Hood 26124

For all heads and compacts



### Bayonet Reflector Support Set 22061

This useful set of four bayonet adapter rings accepts any Elinchrom reflector since 1974. Mounted on free studio wall, reflectors and softboxes are safely stored. White softbox diffusers will say Thank You!



# Accessoires

## Reflectors & Umbrellas

### The Softlite Reflectors 44 and 70 cm

Ideal reflectors for soft and diffused light used in conjunction with either the gold, silver or translucent deflector dish, colour and softness can be modified.

#### Softlite Reflector 44 cm 55°

26166, silver,  
incl. Deflector Set 26303

#### Softlite Reflector 44 cm 80°

26168 white,  
incl. Deflector Set 26303

#### Softlite Reflector 70 cm 64°

26167 silver,  
incl. Deflector Set 26304

#### Softlite Reflector 70 cm 82°

26169 white,  
incl. Deflector Set 26304



Elinchrom and Prolinca are the only systems with the central umbrella fitting, which is essential when reflectors or Rotalux softboxes are used with Deflector Sets. Accessories, which can eliminate, soften and tone sharp shadow edges. Very efficient with Rotalux softboxes.

### Deflector Set gold / silver 11.2 cm 26303



### Deflector Set gold / silver 16.5 cm 26304



### Deflector translucent 14 cm 26305



### Snoot 26061

A traditional accessory, designed to give an approx. 15° controlled spot of light, with a hard shadow effect. Comes with a Snoot Grid.



### Snoot Grid Set 3 26427

Grids of various honeycomb sizes deliver a sharply defined concentrated light source of exceptional quality. The grid is an easy retro fit, with clips to grip the interior of the snoot.

**Note:** The Grid necessarily restricts ventilation of the Snoot. Please monitor heat level at all times. High wattage tungsten lamps or high power multi-flashing are liable to cause overheating.



## Umbrellas

### VariStar 85 & 105

The multitasking umbrella for in and out of studio use. Easy to erect, lightweight and fits into most Elinchrom carrying bags. The umbrella comes with protective bag and the VariStar Set includes one 26164 VariStar Reflector 24 cm. Ideal for industrial, portraits and groups.

VariStar is even in light distribution due to its central positioning over reflector and flashtube.

### VariStar Umbrella 85 cm

incl. protection bag 26383

### VariStar Umbrella 105 cm

incl. protection bag 26384

### VariStar Set 105 26385

**VariStar 105 cm**, incl.  
protection bag, 26384  
**VariStar Reflector 24 cm**  
26164

### VariStar Set 85 26386

**VariStar 85 cm**, incl. protection  
bag 26383  
**VariStar Reflector 24 cm**  
26164



### Professional umbrellas

**White 85 cm** 26372

**Translucent 85 cm** 26371

**Silver 105 cm** 26361

**Translucent 105 cm** 26374

**White 105 cm** 26375

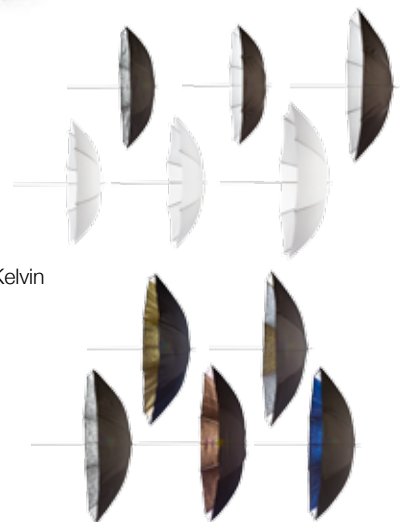
**Gold 105 cm** 26377

**Gold/silver 105 cm** 26378

**Bronze 105 cm** 26379

**EL-Daylight Blue 105 cm** 26380

Converts Tungsten-Halogen  
light 3200° into Daylight 5500° Kelvin



### Budget umbrellas

**Translucent 83 cm** 26351

**Silver 83 cm** 26350

# Accessories

## Elinchrom Set Case 33209

New modern look with ergonomic carrying handle and locking system. Carries and protects three compact flashes Style 300, 600, 1200 or Elinchrom flashheads. 63.5 x 46 x 20.5 cm, 4.75 kg



## EL-Power Pack Case 33215

For all Digital RX packs, all Ranger RX models and 1-2 flashheads.



## Softbag 33197

For 2 x Style FX, BX, RX 300/600 & Compacts Classic.



## Stand / Umbrella Sets

The EL stand/umbrella sets are dedicated to the Elinchrom flash sets and can be ordered separately. The configurations are covering 2 and 3-headed sets.

### Stand Set A 30160

Stand 85–235 cm 30101 / 2 x  
Elinchrom Carrying bag 33220



### Stand Set B 30161

Stand 85–235 cm 30101 / 3 x  
Elinchrom Carrying bag 33220



## Pro Basic Set 20767

Sync cord 11075  
Reflector 16 cm 26143  
Reflector 18 cm 26144  
Umbrella translucent 85 cm 26371  
Umbrella white 85 cm 26372  
Elinchrom Case 33209  
Carrying bag 33220



## Carrying Bags

### Carrying bag 33218

For stands & umbrellas 68 cm

### Carrying bag 33220

For stands & umbrellas up to 87 cm

### Carrying bag 33221

For Octa, Quadra, Recta & Strip

### Carrying bag 33222

For stands & umbrellas up to 110 cm

### Carrying bag 33223

For Rotalux 26178, 26180, 26183

### Carrying bag 33224

For Rotalux 26179, 26181, 26184



## Stand / Umbrella Set To Go 20564

Stand 85–235 cm 30101 / 2 x  
Umbrella translucent 83 cm 26351  
Umbrella silver 83 cm 26350  
Elinchrom Carrying bag 33220

## Stand / Umbrella Set To Go 20536

Stand 85–235 cm 30101 / 2 x  
Umbrella translucent 85 cm 26371  
Umbrella white 85 cm 26372  
Elinchrom Carrying bag 33220



## PolyStand 31045

With the PolyStand unique sliding column and adjustable permanently mounted boom a head or accessory can be placed up to 335 cm, or as low as 5 cm from floor level. Folds flat for travelling.



## Stands by Elinca

	PolyStand	EL Stand
	31045	30101
Length min.	150 cm	85 cm
Length max.	335 cm	235 cm
Diameter	33 x 21 cm	8 cm
Boom	154 cm	
Max. load approx.	6 kg	5 kg
Weight in kg	5.5	1.45

# Accessories

## Manfrotto Tripods & Accessories

**Studio Stand 30151**  
Sliding arm studio stand with braked wheels. It features a very low minimum head position (15 to 250 cm) and accepts additional sliding arms. Weight 7.5 kg



Elinca	Manfrotto	
14599	013	<b>Adapter Spigot</b> 1/4+-3/8" male f. Multi-table
19223	220	<b>Manfrotto Light Table</b>
30127.B	366b	<b>First tripod 85-200</b> black
30128.B	049b	<b>Deluxe Tripod, black</b>
30129	017	<b>Roller Set Deluxe</b> for 30128.B, ø 19 mm
30139.B	012b	<b>Mini Tripod</b> 9-85 cm, black
30149.B	004b	<b>Master Tripod</b> 109-385 cm
30150	018	<b>Roller Set Master</b> for 30149
30151	231	<b>Sliding Support Stand</b> complete
30152	231Arm	<b>Sliding Support Arm</b> Spare, only for 30151
31061.B	024b	<b>Boom Arm 3 x 70 cm</b> black
31065.B	085bs	<b>Light Boom</b> Stand & boom in black
31070.B	025bs	<b>Super Boom</b> Stand & boom in black
31074	083Nw	<b>Tripod 2 Wind-up</b> + wheel set
31075	087Nw 104	<b>Tripod 3 Wind-up</b> + wheel set
31077	104	<b>Wheel Set</b> diam. 75 for 31074 + 31075
31151.B	154b	<b>Triple lamp support</b> black (lamp carrier)
31152	026Z	<b>Umbrella Adapter</b>
31158.B	098b	<b>Telescopic Wall Boom</b>
31159	143	<b>Magic Arm Set</b>
31164	035Z	<b>Super Clamp</b>
32058.B	032b	<b>Autopole</b> 2,1-3,7m, black
32059	045	<b>Triple Hooks</b> for background paper
32060	046	<b>Expan Set</b> holds background paper

**NEW**

## EL Multi-Table

The EL Multi-Table is a flexible creative tool for universal Table-Top shootings. The latest design is a robust, ultra stable aluminium profile construction and is very easy to setup. The EL Multi-Table offers variable radius curves with a multi-angle, adjustable height-shooting surface. A secondary transparent shooting surface enables heavier objects to be photographed without the surface deforming. An optional, additional tray can be mounted for reflective or transmitted lighting effects.

19228



19228 + 19226



## EL Multi-Table Complete 19228

Includes a Plexiglas plate white, matt/glossy 80 x 200 cm / 7.5 kg & transparent plexiglas plate 80 x 100 cm / 11.5 kg

**EL Multi-Table 19227**  
without plexiglas plates

**EL Multi-Table additional tray 19226**  
Including plexiglas plate transparent 80 x 100 cm for second shooting surface

**EL Multi-Table additional tray 19225**  
Without plexiglas plate

**Plexiglas plate white 26265**  
Matt/glossy 200 x 80 cm

**Plexiglas plate transparent 26267**  
80 x 100 cm

## Diffusing Filters

Add extra softness. The diffusers are available in three sizes. Manufactured from a spun glass material to provide resistance to heat.

**Diffusing Filters 21 cm 26249**  
Set of ten filters, to fit the 21 cm  
Accessory holder 26034

**Diffusing Filters 26 cm 26250**  
Set of ten filters, to fit the 26 cm  
Accessory holder 26035

## Polarizing Filters

The rotating facility of the Accessory holders means that Elinchrom flash can be successfully polarized to help control reflections and unwanted highlights. Polarizing filters absorb heat, so reduce modelling lamp power whenever possible.

**Polarizing Filter 21cm 26244**  
One filter, to fit the 21 cm  
Accessory holder 26034

**Polarizing Filter 26 cm 26248**  
One filter, to fit the 26 cm  
Accessory holder 26035

**Colour Gels 21 cm 26243**  
Set of ten assorted gels in bright colours. They can be fitted on the 21 cm 26034 to bring vivid colour to any photography. Note: green blue and purple all absorb heat rapidly and may melt.





# Accessories

## EL-Sync Cords and Accessories

### EL-Sync Cord 5 m 11075

Camera X > EL-Amphenol  
Elinchrom standard sync cord for all self contained (compact) flash units and power packs. Except Style FX, BX & D-Lite.



### EL-Sync Cord 5 m 11088

Camera X > 3.5 mm jack  
EL units with 3.5 mm sync plug:  
Style, Style S, Style RX, FX, BX, Chic 1/2,  
Digital 1/2, Digital RX 1200/2400 & D-Lite.



### EL-Sync Cord 2 m 11084

Camera X > 3.5 mm jack  
EL units with 3.5 mm sync plug:  
Style, Style S, Style RX, FX, BX, Chic 1/2,  
Digital 1/2, Digital RX 1200/2400 & D-Lite.



### EL-Spiral Sync Cord 5 m 11074

Camera X > EL-Amphenol  
Gold plated contacts to increase the connectivity, with a flexible spiral section, for all EL compacts and power packs. Except Style FX, BX & D-Lite.



### EL-Sync Hardwire Cord 5 m 11089

3.5 mm jack > EL-Amphenol  
To hardwire units in case the photocell has a bad reception due to long distance between flash units. For all Style, S, RX compacts and Chic, Digital and Digital RX power packs.



### EL-Sync Extension Cord 10 m 11080

EL-Amphenol female > male  
To extend following sync cords: 11075, 11074, 11089, 11081, 11083, 11072.



### EL-External Photocell with clamp 5 m

11081  
EL-Amphenol > photocell  
A photocell mounted on a clamp with 5 m sync cable and standard EL-Amphenol plug for EL flash units, except Style FX & BX. To be used when the master flash is too far or even hidden from the built-in photocell.



### EL-Sync Adapter 6.35 phone jack 10 cm

11083  
EL Amphenol > 6.35 phone jack female  
To connect sync cords with 6.35 phone jack. Except Style FX, BX.



### EL-FRC Sync Cable 50 cm 11071

Camera X > 2.5 jack  
To synchronise the FRC transmitter and camera



### EL-FRC Sync Cable-Receiver 50 cm 11072

EL-Amphenol male > 2.5 jack  
This cable connects the FRC Receiver 19316 with the EL flash unit. Except Style FX, BX.



### EL-Sync Cord-Prolinca IR-Transmitter 30 cm / 40203 Cord

Camera X > 2.5 jack  
This cable connects the Prolinca IR-Transmitter with the camera.



### Halogen Lamp Adapter 23101

Adapts from an E 27 to a GX 6.35 socket.  
Only suitable for use with Compacts EL 250 and 500 and former Lampheads EL S and T.

Note: Once the adapter is fitted use only with the following lamps:  
For Compacts 23034  
For Lampheads 23022 or 23005



### Modelling Lamps 230 V

See page 31

### Prolinca IR-Transmitter 40203



**DVD Guide to Better Pictures 72404 / Pal**  
Style FX / BX compact flash controls and setting up lighting for portraits. English only.



**DVD D-Lite Quick Start 72406 / Multiformat**  
D-Lite compactflash controls and setting up lighting for portraits. English only.



Power Specs





<b>Style FX &amp; BX</b>	<b>Style 100 FX</b>	<b>Style 400 FX</b>	<b>Style 100 BX</b>	<b>Style 400 BX</b>
Joule / WS; max.	100	400	100	400
F-stop, 1m, 100 ISO, 1/250 s; Reflector 48°	32.5	64.5	32.5	64.5
Power range; Ws	6.25 – 100	25 – 400	6.25 – 100	25 – 400
Mains voltage; Volt	200 V – 260 V	200 V – 260 V	90 V – 260 V	90 V – 260 V
Variable flash power, in f-stop stepless	5 f-stop 1/16 – 1/1			
Recycling, min. / max. 230 V	0.2 / 0.5 s	0.3 / 1.2 s	0.2 / 0.5 s	0.3 / 1 s
Recycling, min. / max. 115 V	-	-	0.2 / 0.6 s	0.3 / 1.2 s
Flash duration @ t 0,5	1 / 1800 s	1 / 900 s	1 / 1800 s	1 / 900 s
Voltage stabilization	+/- 0.5 % maximum stability for digital imaging			
Sync voltage	5 V maximum compatibility with digital cameras			
Modelling lamp 230 V	100 W – E 27 Code 23002		150 W – E27 Code 23035	
Modelling lamp 115 V	-		150 W – E27 Code 23019	
Flashtube code	24032		24029	
Plug-in flashtube	-		Flashtube, user replaceable	
Fan cooled	All models			
Dimensions: length x diameter in cm	21 x 14 cm			
Weight in kg	1.55	1.9	1.65	1.95
Code 220 V - 240 V 50 - 60 Hz	20529	20531	20532	20534
Code 90 V - 260 V 50 - 60 Hz	-	-	20532	20534

<b>Style RX</b>	<b>Style 300 RX</b>	<b>Style 600 RX</b>	<b>Style 1200 RX</b>
Joule / WS; max.	300	600	1200
F-stop, 1m, 100 ISO, 1/250 s; Reflector 48°	64.1	90.1	128.1
Power range; Ws	9 - 300	18 - 600	37 - 1200
Variable flash power, in f-stop stepless	6 f-stop 1/32 -1/1		
Recycling, min. / max. 230 V	0.2 - 0.6 s	0.22 - 1.0 s	0.25 - 1.8 s
Recycling, min. / max. 115 V	0.25 - 0.8 s	0.3 - 1.5 s	0.4 - 2.9 s
Flash duration @ t 0,5	1/2850 s	1/2050 s	1/1450 s
Voltage stabilization	+/- 0.5 %		
Sync voltage	5 V		
Modelling lamp 230 V	250 W E 27-230 V		300 W GX 6.35-230 V
Modelling lamp 115 V USA	150 W - BA 15 D		250 W - BA 15 D
Flashtube code	24029		24068
Interface for Mac and PC / EL-Skyport	All models		
Socket for EL-Skyport & Remote control	All models		
Plug-in flashtube	All models		
Fan cooled	1 fan	2 fans	
Dimensions: length x diameter in cm	21 x 14	21 x 14	30 x 14
Weight in kg	2.3	2.6	3.45
Code 230 V 50 - 60 Hz	20625	20626	20627
Code 115 V - 140 V 50 - 60 Hz	20725	20726	20727

<b>Digital RX Power Packs</b>	<b>Digital 1200 RX</b>	<b>Digital 2400 RX</b>
Joule / Ws	1200	2400
F-stop 1m ISO 100; 1 / 125 s; Reflector 48°	128	180
Recycling min. / max. 230 V / fast	0.24 – 1.0 s	0.4 – 1.9 s
Recycling min. / max. 230 V / slow	0.35 – 1.9 s	0.55 – 3.6 s
Flash duration t 0.5, max. power, 2 x A heads	1/3400 s	1/1700 s
Flash duration t 0.5, max. power, 1x Digital S head	1/1200 s	1/600 s
Power range in Ws, 6 f-stop	37 – 1200	75 – 2400
Computer Interface		All models
Socket for EL-Skyport & Remote control		All models
Sync voltage		5 V
Voltage stabilization		+ - 0.5%
Fan cooled		All models
Modelling lamp, proportional / free / off		All models
Charge ready beep / on-off		All models
Photocell / on-off		All models
ADF, auto dump function		All models
Dimensions in cm	22 x 13 x 23	22 x 13 x 32
Lightweight in kg	4.6	6.6
Code 230 V 50 - 60 Hz	10256	10258
Code 115 - 130 V 50 - 60 Hz	10255	10257

<b>Digital AS</b>	<b>Digital 3000 AS</b>	<b>Digital 1500 AS</b>
Joule / Ws 230 V min. / max.	62 - 3000	31 - 1500
F-stop 1m ISO 100; 1 / 250 s; Reflector 48° 230 V	180.3	128.6
Recycling rapid/medium, max. power 230 V	3.5 s / 4.5 s	1.5 s / 2.1 s
Flash duration t 0.5 max. power, 3 S heads connected	1/1150 s	1/1850 s
Memory		Retains last setting
IR Remote control		All functions, 8 channel settings
Power range		6.6 f-stop
Total power asymmetry		56 individual power settings for each head
Sync voltage		12 V
Ready beep on / off		All models
Photocell on / off		All models
Dimensions in cm	49 x 14 x 32	49 x 14 x 27
Weight in kg	11.65	8.6
Code 230 V 50 - 60 Hz	10254	10248
Code 115 - 130 V 50 - 60 Hz	10253	10247

Note: Tolerances of specifications and components conform to IEC and CE standards. Technical data subject to change. No guarantee for misprints. The listed values can differ due to tolerances in components, or measuring instruments.

## Professional Flashheads

	Digital SEE	Digital SE	Digital S	A 3000 N Speed	X 6000 N Twin	Digital RE
Output in Joule / Ws	2400	3000	4000	3000	2x 3000	3000
Modelling lamp 230 V Modelling lamp 110 V	300 W / GX 6.35				650 W GX 6.35	500 W or 625 W / R7s
Modelling lamp on / off	All models					
Safety Fuse 230 V	2.5 AF					4 AF
Safety Fuse 110 V	5 AF					8AF
Flashtube	Digital X	Digital XL	Digital XXL	Speed	Twin Tube	Linear
Centred umbrella holder	All models					
Stand adapter	All models incl. additional umbrella holder					
Cooling fan	All models					
Bayonet, breech-lock-ring	All models					Barndoor support
Weight incl. 5 m flash cable	2.4	2.4	2.4	2.4	3.3	2.5
Dimensions in cm	22 x 14					9 x 37.5
Code 230 V 50-60 Hz	20172	20174	20150	20168	20182	20170
Code 110 V 50-60 Hz	20173	20175	20149	20167	20183	20169
Code Flashtube	24034	24045	24037	24053	2 x 24069	24022

## Budget Flashheads

	Mini S	Mini A Speed	Twin X 4
Output in Joule / Ws	2400	2400	2 x 2400
Modelling lamp 230 V	250 W / E27	250 W / E27	300 W / GX 6.35
Modelling lamp 110 V	150 W / E27	150 W / E27	
Modelling lamp on / off	All models		
Safety Fuse 230 V	2.5 AF		2.5 AF
Safety Fuse 110 V	2 AF		5 AF
Flashtube	Omega	Speed	Twin Tube
Centred umbrella holder	All models		
Stand adapter	All models incl. additional umbrella holder		
Cooling fan	All models		
Bayonet, breech-lock-ring	All models since 1974		
Weight incl. 5 m flash cable	2.4	2.4	3.3
Dimensions in cm	22 x 13.5	22 x 13.5	22 x 14
Code 230 V 50-60 Hz	20106	20104	20180
Code 110 V 50-60 Hz	20105	20103	20181
Code Flashtube	24034 s	24053	

## Ringflash

	RF 3000	Ranger RX-RF 1500
Max. flash power	3000 Ws / all EL power packs	1500 Ws / only Ranger RX
Compatible power packs	Digital RX 1200 & 2400, Digital AS 1500 & 3000, Classic 1500 & 3000, Micro AS 1500 & 3000	Ranger RX, Ranger RX Speed, Ranger RX Speed AS
Flash duration @ full power t 0.5 – t 0.1	1/2600 – 1/935 (Digital RX 1200)	1/2600 – 1/935 (Ranger RX)
Flash duration @ min. power t 0.5 – t 0.1	1/1920 – 1/760 (Digital RX 1200)	1/1920 – 1/760 (Ranger RX)
F-stop 2 m, ISO 100, @ full power, 1/500 s	22.3 (Digital RX 1200)	22.3 (Ranger RX)
Inner diameter	10 cm	
Outer diameter	20 cm	
Cable length	5 m	2 m
Camera adaptation	Universal, incl. 1/4" and 3/8" camera screw	
Dimensions (L x W x H)	23 x 20 x 32 cm	
Weight	Including cable, 1.9 kg	Including cable, 1.8 kg
Supplied with	UV coated protection glass filter / flash cable	
Ringflash 120 /230 V	20494	
Matt glass diffuser, optional accessory	402.013	
UV coated protection glass filter, spare part	402.012	





## Autonomous Flash

	Ranger RX	Ranger RX Speed	Ranger RX Speed AS
Joule / WS; max.	1100		
Power distribution	Symmetrical		Asymmetrical
Interface for Computer and Hand Remote	All RX models; requires optional accessories + ERS software		
F-stop, 2 m, 100 ISO, 1/250 s; Reflector 48°	64		64 @ 100% ; 45 @ 66% 32 @ 33%
Power range; Ws	17 – 1100		100%: 17 – 1100 66%: A output: 11.5 – 733 33%: B output: 5.7- 366
Power range in f-stop	7 / 1.5 – 7.5		8.5
Recycling, fast @ min. / max. power	0.5 s / 5.5 s	0.3 s / 3 s	A output: fast 0.3 s / 3 s B output: fast 0.19 s / 1.2 s
Recycling slow @ min. / max. power	0.9 s / 14 s	0.45 s / 5.5 s	A output: slow 0.45 s / 5.5 s B output: slow 0.22 s / 1.9 s
Flash duration @ t 0,5; 1 / 2 A heads	1/2300 s / 1/4310 s		A output: 1/2300 s / 1/4310 s B output: 1/5120 s
Flash duration @ t 0,5; 1 / 2 S heads	1/1160 s / 1/2250 s		A output: 1/1250 s / 1/2250 s B output only: 1/2310 s
*Flashes out of one charged Battery @ min. power, slow/fast recycle	3800 / 2600	5100 / 3700	
*Flashes, out of one charged Battery @ max. power, slow/fast recycle	140 / 110	250 / 195	
Sync voltage	5 VDC		
Stabilisation	+/- 1 V		
**Battery lead acid (gel-electrolyte)	12 V / 7 Ah lead acid	12 V / 12 Ah lead acid	
Modelling lamp: ***1 head connected	2 x 50 W / 12 V or ***1 x 100 W / 12 V		
Standard charger: recharge time, approx.	3 h	5 h	
Quick charger: recharge time, approx.	Do not use	3 h	
Dimensions in cm	19 x 14 x 24	19 x 14 x 28	
Weight in kg, incl. Battery	6.5	8	
Ranger pack, included parts	10263 incl.: 19290 + 11075 + 19289 + 19293 + 19374	10265 incl.: 19280 + 11075 + 19289 + 19283 + 19374	10267 incl.: 19280 + 11075 + 19289 + 19283 + 19374

\* Note: The number of flashes, recharging time and battery life, may vary from battery to battery!!

\*\*Note: Used batteries may need to be recycled! Check your local regulations!

\*\*\* Note: Deliveries for 110 V countries includes Charger 19293

## Ranger Heads

	Ranger S	Ranger A Speed	Ringflash 1500
Output in Joule / Ws	2400	2400	1500
Modelling lamp	50 W 12 V	50 W 12 V	-
Modelling lamp timer on / off	15 & 30 seconds		-
Safety Fuse	5AF		-
Flashtube	Omega	Speed	4 pole - Speed
Centred umbrella holder	All models		-
Stand adapter	All models		3/8 – 1/4
Bayonet, breech-lock-ring	All models since 1974		-
Weight incl. 3 m flash cable	2.4 kg	2.4 kg	1.8 kg / *2m cable
Dimensions in cm	22 x 13.5	22 x 13.5	23 x 20 x 32 cm
Code	20100	20101	20493
Code Flashtube	24034 s	24053	

Note: Tolerances of specifications and components conform to IEC and CE standards. Technical data subject to change. No guarantee for misprints. The listed values can differ due to tolerances in components, or measuring instruments.

## Ranger RX / F- Stop Power Table

F-Stop @ 2m, 100 ISO, Free Lite S Head + Range RX Pack

26149	Maxi Spot Reflector 29°	90.1
26147	Maxi Lite Reflector 43°	64.6
26137	High Performance Reflector 48°	64.1
26141	Standard Reflector 50°	45.8
26140	Compact Reflector 65°	45.2
26144	Grid Reflector 60°	45.0
26164	Varistar Reflector 90°	32.6
26143	Wide Reflector 90°	32.0

## Display Power Equivalents

7.5	1100 Ws
7.0	780 Ws
6.5	550 Ws
6.0	390 Ws
5.5	275 Ws
5.0	195 Ws
4.5	137 Ws
4.0	98 Ws
3.5	68 Ws
2.5	34 Ws
1.5	17 Ws

## Continuous Light

	Scanlite (1000 W)	Minilite (250 W)
Aperture: 2m / 100 ISO 1/30 s, Ref. 48°	8.6	5.6
Aperture with Pyrex dome mat	8.0	-
Lux @ 1000 W	6500	-
Lux @ 250 W	-	1050
Colour Temperature °K	3200°K	3200°K
Bayonet, breech-lock-ring		All models since 1974
Modelling lamps, configurations	300, 650, 1000 / GX 6.35	100, 250 W / E27
Cooling fan		All models
Weight in kg	1.2 / incl. cable 1.7	1.1
Dimensions in cm	14x18 / incl. glass dome 22	22 x 13
Code 230 V 50 - 60 Hz incl. lamp	20996-300 W / 20997-650 W / 20994-1000 W	20651
Code 115 V 50 - 60 Hz exclude- / inc.l lamp	20993-1000 W	-

## Rotalux Softbox

Code	Size / cm	Coverage without diffusers	Coverage with diffusers	Depth / cm	Weight / kg including bag
26178	Quadra 70 x 70	83°	69°	32	1.07
26179	Quadra 100 x 100	81°	69°	42	1.42
26180	Strip 35 x 90	71° / 82°	66° / 69°	25	0.97
26181	Strip 50 x 130	64° / 87°	59° / 69°	42	1.45
26183	Octa 100	82°	68°	35	1.22
26184	Octa 135	81°	75°	42	1.55
26185	Deep Octa 100	73°	65°	65	1.5

Technical data subject to change. The listed values can differ due to tolerances in components or measuring instruments.





## Indirect Softlites

	Angle	Depth	Weight
Recta, Strip, Octa, Quadra	in degrees	in cm	in kg, including Carrying bag
26154 EL Recta Lite 72 x 175 cm vert. / horizontal	56° / 77°	57	4
26224 Front Diff. (without outer diffuser)	46° / 95°		
26160 EL Strip Lite 33 x 175 cm vert. / horizontal	64° / 73	57	3.5
26230 Front Diff. (without outer diffuser)	48° / 100°		
26158 EL Octa Lite 190 x 190 cm	71°	57	5
26228 Front Diff. (without outer diffuser)	82°		
26156 EL Quadra Lite 145 x 145cm	73°	57	4.5
26226 Front Diff. (without outer diffuser)	75°		
26236 Round Diff. 125 cm	66°		

NB. Without diffusers the effect is of a huge normal reflector.

## Elinchrom Spots

	Minispot	ZoomSpot 18°-36°	Fiber Lite
Diameter of illumination, distance 2 m, min. / max.	1 m	0.7 / 1.3 m	Dist. 5 cm ø 4 cm Dist. 10 cm ø 7 cm
Aperture from 2 m, 100 ISO, t 1/125, Digital RX - 1200 J @ max. power, spot / wide	11.5	22.6 / 16.7	Dist. 10 cm with Lens / 64.9 f
Code 230 V 50 - 60 Hz	26420	26481	26430 / 31
Code 115 - 130 V 50 - 60 Hz			
Max. flash power in Joule / Ws		3000	
Max. modelling light	300 / 650 W	Note: Enclosing accessories can build up excessive heat!	
Dimensions: L x W x H in cm	26 x 12	45 x 15 x 15	-
Weight in kg	0.6	4.75	-

## Modelling Lamps 230 V

Code	Power	Lumen	Av. Life	Type	Socket	To use with
23044	50 W /12 V	900	3000 h	Halogen	GX 6.35	Ranger S, Ranger A, Free Lite S, FreeLite A
23046	100 W /12V	2200	2000 h	Halogen	GX 6.35	Ranger S, Ranger A, Free Lite S, FreeLite A
23002	100 W	2700	500 h	Krypton	E 27	EL 250, 250 S, 500, 500 S, 22, 23, 66, S, T, Box Lite, Style 300 / 600, Style FX 100 / 400, MiniLite
23035	150 W	2400	2000 h	Halogen	E 27	Style BX 100 / 400
23004	250 W	4000	500 h	Halogen	E 14	EL A
23005	650 W	20000	45 h	Halogen	GX 6.35	EL X6000N, Spot Lite 3000, X 8000, X, ScanLite
23018	250 W	4500	2000 h	Halogen	E 27	EL 66, S, T, Style S & RX 300/600, Mini S/A, MiniLite
23020	500 W	9000	500 h	Halogen	E 14	EL A
23022	300 W	8500	45 h	Halogen	GX 6.35	EL S1500N, S3000N, S1500, S3000, A3000N, A4000 A2/4, Style S / RX 1200, Digital SEE, SE, S, ScanLite
23029	625 W	9500	2000 h	Halogen	R7 s	EL R3000, Mini R Head, R2000, R2, R4
23052	1000 W	27500	75 h	Halogen	GX 6.35	ScanLite
23034	200 W	4000	45 h	Halogen	GX 6.35	EI 1000, 750 S, 1500 S, 1500 R

Note: Tolerances of specifications and components conform to IEC and CE standards. Technical data subject to change. No guarantee for misprints. The listed values can differ due to tolerances in components, or measuring instruments.



**ELINCA** HAS BEEN AT THE **FOREFRONT** OF PHOTOGRAPHIC **LIGHTING** TECHNOLOGY SINCE THE **EARLIEST** DAYS OF STUDIO FLASH MANUFACTURE. A RESULT OF CONSTANT PRODUCT **REFINEMENTS** AND A DEDICATION TO **RESEARCH** AND **DEVELOPMENT**, OUR PRODUCTS ARE OWNED AND RENTED BY THE WORLD'S **LEADING** PHOTOGRAPHERS. FROM OUR HEADQUARTERS AND MANUFACTURING FACILITY OVERLOOKING **LAKE GENEVA**, WE EXPORT ELINCHROM STUDIO FLASH AROUND THE **WORLD**. OUR BUILDING REFLECTS NOT ONLY OUR **SUCCESS** BUT ALSO OUR COMMITMENT TO **ALL** USERS OF ELINCHROM - BOTH PRESENT AND **FUTURE**.



elinca s.a. switzerland www.elinchrom.com

